

## FURTHER DATA TO THE BEETLE FAUNA OF MARAMUREȘ, ROMANIA (COLEOPTERA)

Ottó MERKL\*, György MAKRANCZY, Tamás NÉMETH, Attila PODLUSSÁNY, Győző SZÉL  
Department of Zoology, Hungarian Natural History Museum, Budapest, Hungary

**ABSTRACT.** A total of 266 beetle species are listed from the Maramureș region, northern Romania. The material was collected mainly on Pietroșul Rodnei (Munții Rodnei), in Munții Lăpușului and in the valley of the Iza river.

**Key words:** Coleoptera, Maramureș, Rodna Mountains, Romania, faunistics.

### INTRODUCTION

Between 2004 and 2008 the staff of the Department of Zoology of the Hungarian Natural History Museum (HNHM, Magyar Természettudományi Múzeum, Budapest) carried out collectings of invertebrates in the Maramureș region as part of a contract between the Vasile Goldiș Western University (Universitatea de Vest „Vasile Goldiș”, Arad) and the HNHM. The project was completed with a series of papers summarizing the results of the exploration. These were published in 2006 and 2008 in the 17<sup>th</sup> and 18<sup>th</sup> volumes of the journal *Studia Universitatis Vasile Goldiș, Seria Științele Vieții* (Arad). A list of the beetles (Coleoptera) from Maramureș was compiled by Merkl (2008).

In August of 2009, a further trip was organized in Maramureș with the aim of accessing the subalpine area of Pietroșul Rodnei, the highest part of Maramureș. Although the weather adversely affected the work, a list of the beetle species collected during this trip is given in this paper.

A total of 85 species marked with asterisk (\*) were not found during the previous trips and consequently are additional to Merkl (2008).

### MATERIAL AND DATA PRESENTATION

All specimens are deposited in the Coleoptera Collection of the HNHM. Label data of the specimens are listed as follows: the settlement (town or village as administrative unit) is mentioned first, followed by topographical names and elevation of the locality then by name of the habitat, collecting method, date of collecting and monograms of the collectors (AG = Aranka Grabant, OM = Ottó Merkl, TN = Tamás Németh, ZGy = Zoltán György).

Identification of the specimens was carried out by Hungarian coleopterists. Their names are given under the names of beetle families. The sequence of the families follows Merkl & Vig (1995).

### LIST OF SPECIES

Dytiscidae

Ottó Merkl (Budapest)

\**Agabus biguttatus* (Olivier, 1795) – Călinești, Munții Lăpușului, La Secătura, 600 m, mixed spruce & beech forest, swept & singled, 6.VIII.2009, AG, ZGy, OM & TN.

*Agabus bipustulatus* (Linnaeus, 1767) – Călinești, Munții Lăpușului, La Secătura, 600 m, mixed spruce & beech forest, swept & singled, 6.VIII.2009, AG, ZGy, OM & TN.

\**Rhantus suturalis* (Macleay, 1825) – Sighetu Marmației, Dobăieș, 400 m, hay meadow, at light, 3.VIII.2009, AG, ZGy, OM & TN.

Carabidae

Győző Szél (Budapest)

*Agonum viduum* (Panzer, 1796) – Bârsana, Iza river, 450 m, singled from gravelly riverside, 6. VIII.2009, AG, ZG, OM & TN.

\**Amara bifrons* (Gyllenhal, 1810) – Sighetu Marmației, Dobăieș, 400 m, hay meadow, at light, 3.VIII.2009, AG, ZGy, OM & TN.

*Amara erratica* (Duftschmid, 1812) – Borșa, Munții Rodnei, Pietrosul Rodnei, spruce zone, 1500 m, singled & swept, 5.VIII.2009, AG, ZG, OM & TN.

\**Amara majuscula* (Chaudoir, 1850) – Sighetu Marmației, Dobăieș, 400 m, hay meadow, at light, 3.VIII.2009, AG, ZGy, OM & TN.

\**Amara misella* Miller, 1868 (Fig. 1) – Borșa, Munții Rodnei, Pietrosul Rodnei, subalpine zone, 1800 m, singled & swept, 5.VIII.2009, AG, ZG, OM & TN.

\**Bembidion articulatum* (Panzer, 1796) – Bârsana, Iza river, 450 m, singled from gravelly riverside, 6. VIII.2009, AG, ZG, OM & TN; Bârsana, Munții Lăpușului, Valea Mori, 460 m, singled from gravelly streamside, 6. VIII.2009, AG, ZG, OM & TN.

*Bembidion azurescens* Dalla Torre, 1877 – Bârsana, Iza river, 450 m, singled from gravelly riverside, 6. VIII.2009, AG, ZG, OM & TN; Bârsana, Munții Lăpușului, Valea Mori, 460 m, singled from gravelly streamside, 6. VIII.2009, AG, ZG, OM & TN.

*Bembidion bipunctatum* (Duftschmid, 1812) – Borșa, Munții Rodnei, Pietrosul Rodnei, spruce zone,



1500 m, singled & swept, 5.VIII.2009, AG, ZG, OM & TN.

*Bembidion cruciatum bualei* Jacquelin du Val, 1852 – Bârsana, Iza river, 450 m, singled from gravelly riverside, 6. VIII.2009, AG, ZG, OM & TN.

\**Bembidion decoratum* (Duftschmid, 1812) – Bârsana, Munții Lăpușului, Valea Mori, 460 m, singled from gravelly streamside, 6. VIII.2009, AG, ZG, OM & TN.

*Bembidion decorum* (Panzer, 1799) – Bârsana, Iza river, 450 m, singled from gravelly riverside, 6.VIII.2009, AG, ZGy, OM & TN; Bârsana, Munții Lăpușului, Valea Mori, 460 m, singled from gravelly streamside, 6. VIII.2009, AG, ZG, OM & TN.

\**Bembidion foraminosum* Sturm, 1825 – Bârsana, Iza river, 450 m, singled from gravelly riverside, 6.VIII.2009, AG, ZGy, OM & TN.

\**Bembidion glaciale* Heer, 1837 – Borșa, Munții Rodnei, Pietrosul Rodnei, spruce zone, 1500 m, singled & swept, 5.VIII.2009, AG, ZG, OM & TN; Borșa, Munții Rodnei, Pietrosul Rodnei, subalpine zone, 1800 m, singled & swept, 5.VIII.2009, AG, ZG, OM & TN.

*Bembidion lampros* (Herbst, 1784) – Săcel, Munții Rodnei, Valea Izei, 850 m, stream valley, sifted, 5.VIII.2009, AG, ZGy, OM & TN.

\**Bembidion modestum* (Fabricius, 1801) – Bârsana, Iza river, 450 m, singled from gravelly riverside, 6.VIII.2009, AG, ZGy, OM & TN.

\**Bembidion monticola* Sturm, 1825 – Bârsana, Iza river, 450 m, singled from gravelly riverside, 6.VIII.2009, AG, ZGy, OM & TN; Sighetu Marmăției, Dobăieș, 400 m, hay meadow, at light, 3.VIII.2009, AG, ZG, OM & TN.

*Bembidion properans* Stephens, 1828 – Borșa, Munții Rodnei, Pietrosul Rodnei, subalpine zone, 1800 m, sifted, 5.VIII.2009, AG, ZG, OM & TN.

\**Bembidion punctulatum* Drapiez, 1820 – Bârsana, Iza river, 450 m, singled from gravelly riverside, 6.VIII.2009, AG, ZGy, OM & TN.

\**Bembidion quadrimaculatum* (Linnaeus, 1761) – Săpânța, Săpânța river, 400 m, singled & swept at the riverside, 3.VIII.2009, AG, ZG, OM & TN.

\**Bembidion ruficorne* Sturm, 1825 – Bârsana, Iza river, 450 m, singled from gravelly riverside, 6.VIII.2009, AG, ZGy, OM & TN.

*Bembidion subcostatum* Motschulsky, 1850 – Bârsana, Iza river, 450 m, singled from gravelly riverside, 6.VIII.2009, AG, ZGy, OM & TN; Bârsana, Munții Lăpușului, Valea Mori, 460 m, singled from gravelly streamside, 6. VIII.2009, AG, ZG, OM & TN.

*Bembidion testaceum* (Duftschmid, 1812) – Bârsana, Iza river, 450 m, singled from gravelly riverside, 6.VIII.2009, AG, ZGy, OM & TN.

\**Bembidion tetracolum* Say, 1823 – Bârsana, Iza river, 450 m, singled from gravelly riverside, 6.VIII.2009, AG, ZGy, OM & TN.

*Bembidion tibiale* (Duftschmid, 1812) – Bârsana, Munții Lăpușului, Valea Mori, 460 m, singled from gravelly streamside, 6. VIII.2009, AG, ZG, OM & TN.

*Bembidion varicolor* (Fabricius, 1803) – Bârsana, Iza river, 450 m, singled from gravelly riverside, 6.VIII.2009, AG, ZGy, OM & TN.

*Bradycellus caucasicus* (Chaudoir, 1846) – Săcel, Munții Rodnei, Valea Izei, 850 m, stream valley, sifted, 5.VIII.2009, AG, ZG, OM & TN.

*Calathus fuscipes* (Goeze, 1777) – Bârsana, Iza river, 450 m, singled from gravelly riverside, 6.VIII.2009, AG, ZGy, OM & TN; Bârsana, Munții Lăpușului, Valea Mori, 460 m, singled from gravelly streamside, 6.VIII.2009, AG, ZGy, OM & TN.

*Carabus linnei linnei* Duftschmid, 1812 – Borșa, Munții Rodnei, Pietrosul Rodnei, spruce zone, 1500 m, singled & swept, 5.VIII.2009, AG, ZGy, OM & TN.

*Carabus auronitens escheri* Palliard, 1825 – Călinești, Munții Lăpușului, La Secătura, 600 m, mixed spruce & beech forest, swept & singled, 6.VIII.2009, AG, ZGy, OM & TN.

*Carabus violaceus andrzejuscii* Fischer von Waldheim, 1823 – Borșa, Munții Rodnei, Pietrosul Rodnei, spruce zone, 1500 m, singled & swept, 5.VIII.2009, AG, ZGy, OM & TN.

*Chlaenius nitidulus* (Schrank, 1781) – Bârsana, Iza river, 450 m, singled from gravelly riverside, 6. VIII.2009, AG, ZG, OM & TN; Bârsana, Munții Lăpușului, Valea Mori, 460 m, singled from gravelly streamside, 6. VIII.2009, AG, ZG, OM & TN.

*Chlaenius vestitus* (Paykull, 1790) – Bârsana, Iza river, 450 m, singled from gravelly riverside, 6. VIII.2009, AG, ZG, OM & TN.

*Clivina contracta* (Geoffroy, 1785) – Bârsana, Iza river, 450 m, singled from gravelly riverside, 6. VIII.2009, AG, ZG, OM & TN.

\**Dyschirius laeviusculus* Putzeys, 1846 – Bârsana, Iza river, 450 m, singled from gravelly riverside, 6. VIII.2009, AG, ZG, OM & TN.

\**Dyschirius politus* (Dejean, 1825) – Bârsana, Iza river, 450 m, singled from gravelly riverside, 6. VIII.2009, AG, ZG, OM & TN.

\**Elaphropus diabrachys* (Kolenati, 1845) – Bârsana, Iza river, 450 m, singled from gravelly riverside, 6. VIII.2009, AG, ZG, OM & TN.

\**Elaphropus quadrisignatus* (Duftschmid, 1812) – Bârsana, Iza river, 450 m, singled from gravelly riverside, 6. VIII.2009, AG, ZG, OM & TN; Bârsana, Munții Lăpușului, Valea Mori, 460 m, singled from gravelly streamside, 6. VIII.2009, AG, ZG, OM & TN.

*Elaphrus aureus* P.W.J. Müller, 1821 – Bârsana, Iza river, 450 m, singled from gravelly riverside, 6.VIII.2009, AG, ZGy, OM & TN; Bârsana, Munții Lăpușului, Valea Mori, 460 m, singled from gravelly streamside, 6.VIII.2009, AG, ZGy, OM & TN.

\**Harpalus griseus* (Panzer, 1796) – Sighetu Marmației, Dobăieș, 400 m, hay meadow, at light, 3.VIII.2009, AG, ZG, OM & TN.

\**Leistus ferrugineus* (Linnaeus, 1758) – Borșa, Munții Rodnei, Pietrosul Rodnei, subalpine zone, 1800 m, sifted, 5.VIII.2009, AG, ZG, OM & TN; Borșa, Munții Rodnei, Pietrosul Rodnei, subalpine zone, 1800 m, singled & swept, 5.VIII.2009, AG, ZG, OM & TN.

*Nebria transsylvanica* Germar, 1824 – Borșa, Munții Rodnei, Pietrosul Rodnei, spruce zone, 1500 m, singled & swept, 5.VIII.2009, AG, ZG, OM & TN; Borșa, Munții Rodnei, Pietrosul Rodnei, subalpine zone, 1800 m, singled & swept, 5.VIII.2009, AG, ZG, OM & TN.

*Notiophilus biguttatus* (Fabricius, 1779) – Borșa, Munții Rodnei, Pietrosul Rodnei, spruce zone, 1500 m, singled & swept, 5.VIII.2009, AG, ZG, OM & TN; Borșa, Munții Rodnei, Pietrosul Rodnei, subalpine zone, 1800 m, sifted, 5.VIII.2009, AG, ZG, OM & TN; Borșa, Munții Rodnei, Pietrosul Rodnei, subalpine zone, 1800 m, singled & swept, 5.VIII.2009, AG, ZG, OM & TN.

*Notiophilus palustris* (Duftschmid, 1812) – Bârsana, Iza river, 450 m, singled from gravely riverside, 6. VIII.2009, AG, ZG, OM & TN; Bârsana, Munții Lăpușului, Valea Mori, 460 m, singled from gravely streamside, 6. VIII.2009, AG, ZG, OM & TN.

\**Oxypselaphus obscurus* (Herbst, 1784) – Bârsana, Iza river, 450 m, singled from gravely riverside, 6.VIII.2009, AG, ZGy, OM & TN; Bârsana, Munții Lăpușului, Valea Mori, 460 m, singled from gravely streamside, 6.VIII.2009, AG, ZGy, OM & TN.

\**Perileptus areolatus* (Creutzer, 1799) – Bârsana, Iza river, 450 m, singled from gravely riverside, 6.VIII.2009, AG, ZGy, OM & TN.

\**Philorhizus notatus* (Stephens, 1827) – Bârsana, Munții Lăpușului, Magura de la Valea Mori, 500 m, oak forest, sifted, 6. VIII.2009, AG, ZG, OM & TN.

\**Platynus assimilis* (Paykull, 1790) – Călinești, Munții Lăpușului, La Secătura, 600 m, mixed spruce & beech forest, swept & singled, 6.VIII.2009, AG, ZGy, OM & TN.

*Poecilus versicolor* (Sturm, 1824) – Săcel, Munții Rodnei, Valea Izei, 850 m, stream valley, singled, 5.VIII.2009, AG, ZGy, OM & TN.

*Pterostichus anthracinus* (Illiger, 1798) – Bârsana, Munții Lăpușului, Valea Mori, 460 m, singled from gravely streamside, 6.VIII.2009, AG, ZGy, OM & TN.

*Pterostichus melanarius* (Illiger, 1798) – Bârsana, Iza river, 450 m, singled from gravely riverside, 6.VIII.2009, AG, ZGy, OM & TN.

*Pterostichus pilosus* (Host, 1789) – Borșa, Munții Rodnei, Pietrosul Rodnei, spruce zone, 1500 m, singled & swept, 5.VIII.2009, AG, ZGy, OM & TN; Borșa, Munții Rodnei, Pietrosul Rodnei, subalpine zone, 1800 m, singled & swept, 5.VIII.2009, AG, ZGy, OM & TN.

*Pterostichus unctulatus* (Duftschmid, 1812) – Borșa, Munții Rodnei, Pietrosul Rodnei, subalpine zone, 1800 m, sifted, 5.VIII.2009, AG, ZG, OM & TN; Borșa, Munții Rodnei, Pietrosul Rodnei, subalpine zone, 1800 m, singled & swept, 5.VIII.2009, AG, ZG, OM & TN.

\**Stenolophus teutonius* (Schrank, 1781) – Bârsana, Iza river, 450 m, singled from gravely riverside, 6. VIII.2009, AG, ZG, OM & TN.

*Tachyta nana* (Gyllenhal, 1810) – Călinești, Munții Lăpușului, La Secătura, 600 m, mixed spruce & beech forest, swept & singled, 6. VIII.2009, AG, ZG, OM & TN.

*Trechus latus* Putzeys, 1847 – Borșa, Munții Rodnei, Pietrosul Rodnei, subalpine zone, 1800 m, sifted, 5.VIII.2009, AG, ZG, OM & TN.

*Trechus pulchellus* Putzeys, 1846 – Sighetu Marmației, Dobăieș, 400 m, hay meadow, at light, 3.VIII.2009, AG, ZG, OM & TN.

\**Trechus quadristriatus* (Schrank, 1781) – Bârsana, Munții Lăpușului, Magura de la Valea Mori, 500 m, oak forest, sifted, 6.VIII.2009, AG, ZGy, OM & TN.

*Trichotichnus laevicollis* (Duftschmid, 1812) – Borșa, Munții Rodnei, Pietrosul Rodnei, subalpine zone, 1800 m, singled & swept, 5.VIII.2009, AG, ZG, OM & TN.

#### Helophoridae

Szél Győző (Budapest)

\**Helophorus montenegrinus* Kuwert, 1885 – Călinești, Munții Lăpușului, La Secătura, 600 m, mixed spruce & beech forest, sifted, 6. VIII.2009, AG, ZG, OM & TN.

#### Hydrophilidae

Szél Győző (Budapest)

\**Cercyon laminatus* Sharp, 1873 – Sighetu Marmației, Dobăieș, 400 m, hay meadow, at light, 3.VIII.2009, AG, ZG, OM & TN.

*Cercyon lateralis* (Marsham, 1802) – Borșa, Munții Rodnei, Pietrosul Rodnei, spruce zone, 1500 m, singled & swept, 5.VIII.2009, AG, ZG, OM & TN; Sighetu Marmației, Dobăieș, 400 m, hay meadow, at light, 3.VIII.2009, AG, ZG, OM & TN.

\**Cercyon pygmaeus* (Illiger, 1801) – Sighetu Marmației, Dobăieș, 400 m, hay meadow, at light, 3.VIII.2009, AG, ZG, OM & TN.

*Cercyon quisquilius* (Linnaeus, 1761) – Sighetu Marmației, Dobăieș, 400 m, hay meadow, at light, 3.VIII.2009, AG, ZG, OM & TN.

\**Cercyon unipunctatus* (Linnaeus, 1758) – Sighetu Marmației, Dobăieș, 400 m, hay meadow, at light, 3.VIII.2009, AG, ZG, OM & TN.

\**Cryptopleurum subtile* Sharp, 1884 – Sighetu Marmației, Dobăieș, 400 m, hay meadow, at light, 3.VIII.2009, AG, ZG, OM & TN.





Histeridae

Ottó Merkl (Budapest)

*Platysoma compressum* (Herbst, 1783) – Călinești, Munții Lăpușului, La Secătura, 600 m, mixed spruce & beech forest, swept & singled, 6.VIII.2009, AG, ZGy, OM & TN.

Silphidae

Ottó Merkl (Budapest)

*Nicrophorus vespillo* (Linnaeus, 1758) – Sighetu Marmației, Dobăieș, 400 m, hay meadow, at light, 3.VIII.2009, AG, ZGy, OM & TN.

*Silpha carinata* Herbst, 1783 – Săcel, Munții Rodnei, Valea Izei, 850 m, stream valley, singled, 5.VIII.2009, AG, ZGy, OM & TN.

Staphylinidae

György Makranczy (Budapest) (majority) and Ottó Merkl (Budapest) (*Scaphisoma* and *Scaphidium*)

*Amischa analis* (Gravenhorst, 1802) – Borșa, Munții Rodnei, Pietrosul Rodnei, subalpine zone, 1800 m, sifted, 5.VIII.2009, AG, ZGy, OM & TN.

*Anthophagus omalinus* Zetterstedt, 1828 – Borșa, Munții Rodnei, Pietrosul Rodnei, spruce zone, 1500 m, singled & swept, 5.VIII.2009, AG, ZGy, OM & TN.

\**Astenus procerus* (Gravenhorst, 1806) – Bârsana, Munții Lăpușului, Magura de la Valea Mori, 500 m, oak forest, sifted, 6.VIII.2009, AG, ZGy, OM & TN.

\**Atheta rugulosa* (Heer, 1839) – Borșa, Munții Rodnei, Pietrosul Rodnei, subalpine zone, 1800 m, sifted, 5.VIII.2009, AG, ZGy, OM & TN.

*Atrecus affinis* (Paykull, 1789) – Călinești, Munții Lăpușului, La Secătura, 600 m, mixed spruce & beech forest, sifted, 6.VIII.2009, AG, ZGy, OM & TN.

\**Bledius cribricollis* Heer, 1839 – Sighetu Marmației, Dobăieș, 400 m, hay meadow, at light, 3.VIII.2009, AG, ZGy, OM & TN.

*Carpelimus erichsoni* (Sharp, 1871) – Sighetu Marmației, Dobăieș, 400 m, hay meadow, at light, 3.VIII.2009, AG, ZGy, OM & TN.

*Carpelimus obesus* (Kiesenwetter, 1844) – Sighetu Marmației, Dobăieș, 400 m, hay meadow, at light, 3.VIII.2009, AG, ZGy, OM & TN.

*Dinaraea aequata* (Erichson, 1837) – Bârsana, Iza river, 450 m, singled from bracket fungi, 6.VIII.2009, AG, ZGy, OM & TN; Bârsana, Munții Lăpușului, Valea Mori, 460 m, singled from gravely streamside, 6.VIII.2009, AG, ZGy, OM & TN.

*Eusphalerum longipenne* (Erichson, 1839) – Borșa, Munții Rodnei, Pietrosul Rodnei, spruce zone, 1500 m, singled & swept, 5.VIII.2009, AG, ZGy, OM & TN.

\**Gabrius osseticus* (Kolenati, 1846) – Bârsana, Munții Lăpușului, Valea Mori, 460 m, singled from gravely streamside, 6.VIII.2009, AG, ZGy, OM & TN.

*Gyrohypnus angustatus* Stephens, 1833 – Borșa, Munții Rodnei, Pietrosul Rodnei, subalpine zone, 1800 m, singled & swept, 5.VIII.2009, AG, ZGy, OM & TN.

*Gyrophana congrua* Erichson, 1837 – Bârsana, Iza river, 450 m, singled from gravely riverside, 6.VIII.2009, AG, ZGy, OM & TN.

\**Habrocerus capillaricornis* (Gravenhorst, 1806) – Bârsana, Munții Lăpușului, Magura de la Valea Mori, 500 m, oak forest, sifted, 6.VIII.2009, AG, ZGy, OM & TN.

\**Hypsonothrus deubeli* (Ganglbauer 1896) (Fig. 2) – Borșa, Munții Rodnei, Pietrosul Rodnei, subalpine zone, 1800 m, sifted, 5.VIII.2009, AG, ZGy, OM & TN.

*Leptusa alpicola* Brancsik, 1874 – Borșa, Munții Rodnei, Pietrosul Rodnei, subalpine zone, 1800 m, sifted, 5.VIII.2009, AG, ZGy, OM & TN.

*Leptusa carpathica* Weise, 1877 – Borșa, Munții Rodnei, Pietrosul Rodnei, subalpine zone, 1800 m, sifted, 5.VIII.2009, AG, ZGy, OM & TN; Călinești, Munții Lăpușului, La Secătura, 600 m, mixed spruce & beech forest, sifted, 6.VIII.2009, AG, ZGy, OM & TN.

*Mocyta fungi* (Gravenhorst, 1806) – Bârsana, Iza river, 450 m, singled from gravely riverside, 6.VIII.2009, AG, ZGy, OM & TN.

*Neobisnius prolixus* (Erichson, 1840) – Bârsana, Iza river, 450 m, singled from gravely riverside, 6.VIII.2009, AG, ZGy, OM & TN; Sighetu Marmației, Dobăieș, 400 m, hay meadow, at light, 3.VIII.2009, AG, ZGy, OM & TN.

*Ochtheophilum fracticorne* (Paykull, 1800) – Săcel, Munții Rodnei, Valea Izei, 850 m, stream valley, sifted, 5.VIII.2009, AG, ZGy, OM & TN.

\**Ocypus biharicus* Müller, 1926 – Călinești, Munții Lăpușului, La Secătura, 600 m, mixed spruce & beech forest, swept & singled, 6.VIII.2009, AG, ZGy, OM & TN.

*Ocypus macrocephalus* (Gravenhorst, 1802) – Borșa, Munții Rodnei, Pietrosul Rodnei, spruce zone, 1500 m, singled & swept, 5.VIII.2009, AG, ZGy, OM & TN.

*Ocypus nitens* (Schrank, 1781) – Săcel, Munții Rodnei, Valea Izei, 850 m, stream valley, singled, 5.VIII.2009, AG, ZGy, OM & TN.

\**Ocypus ormayi* (Reitter 1887) – Borșa, Munții Rodnei, Pietrosul Rodnei, spruce zone, 1500 m, singled & swept, 5.VIII.2009, AG, ZGy, OM & TN.

*Paederidus rubrothoracicus carpathicola* Scheerpeltz, 1957 – Bârsana, Iza river, 450 m, singled from gravely riverside, 6.VIII.2009, AG, ZGy, OM & TN.

*Paederidus ruficollis* (Fabricius, 1781) – Bârsana, Iza river, 450 m, singled from gravely riverside, 6.VIII.2009, AG, ZGy, OM & TN; Săpânța, Săpânța river, 400 m, singled & swept at the riverside, 3.VIII.2009, AG, ZGy, OM & TN.

\**Paederus fuscipes* Curtis, 1826 – Sighetu Marmăţiei, Dobăieş, 400 m, swept along the Rona river, 3.VIII.2009, AG, ZGy, OM & TN.

*Paederus limophilus* Heer, 1839 – Bârsana, Iza river, 450 m, singled from gravely riverside, 6.VIII.2009, AG, ZGy, OM & TN.

*Philonthus cognatus* Stephens, 1832 – Săcel, Munţii Rodnei, Valea Izei, 850 m, stream valley, singled, 5.VIII.2009, AG, ZGy, OM & TN.

\**Philonthus quisquiliarius* (Gyllenhal, 1810) – Bârsana, Iza river, 450 m, singled from gravely riverside, 6.VIII.2009, AG, ZGy, OM & TN; Borşa, Munţii Rodnei, Pietrosul Rodnei, spruce zone, 1500 m, singled & swept, 5.VIII.2009, AG, ZGy, OM & TN; Sighetu Marmăţiei, Dobăieş, 400 m, hay meadow, at light, 3.VIII.2009, AG, ZGy, OM & TN.

*Philonthus rubripennis* Stephens, 1832 – Bârsana, Iza river, 450 m, singled from gravely riverside, 6.VIII.2009, AG, ZGy, OM & TN; Bârsana, Munţii Lăpuşului, Valea Mori, 460 m, singled from gravely streamside, 6.VIII.2009, AG, ZGy, OM & TN.

\**Platydracus stercorarius* (Olivier, 1795) – Sighetu Marmăţiei, Dobăieş, 400 m, swept along the Rona river, 3.VIII.2009, AG, ZGy, OM & TN.

\**Quedius cinctus* (Paykull, 1790) – Borşa, Munţii Rodnei, Pietrosul Rodnei, subalpine zone, 1800 m, sifted, 5.VIII.2009, AG, ZGy, OM & TN; Borşa, Munţii Rodnei, Pietrosul Rodnei, subalpine zone, 1800 m, singled & swept, 5.VIII.2009, AG, ZGy, OM & TN.

*Quedius paradisiensis* (Heer, 1839) – Călineşti, Munţii Lăpuşului, La Secătura, 600 m, mixed spruce & beech forest, sifted, 6.VIII.2009, AG, ZGy, OM & TN.

*Rugilus rufipes* (Germar, 1836) – Bârsana, Munţii Lăpuşului, Valea Mori, 460 m, singled from gravely streamside, 6.VIII.2009, AG, ZGy, OM & TN.

*Rugilus subtilis* Erichson, 1840 – Bârsana, Munţii Lăpuşului, Valea Mori, 460 m, singled from gravely streamside, 6.VIII.2009, AG, ZGy, OM & TN.

*Scaphidium quadrimaculatum* Olivier, 1790 – Bârsana, Munţii Lăpuşului, Magura de la Valea Mori, 500 m, oak forest, sifted, 6.VIII.2009, AG, ZGy, OM & TN.

*Scaphisoma agaricinum* (Linnaeus, 1758) – Bârsana, Munţii Lăpuşului, Magura de la Valea Mori, 500 m, oak forest, sifted, 6.VIII.2009, AG, ZGy, OM & TN.

*Sepedophilus immaculatus* (Stephens, 1832) – Bârsana, Munţii Lăpuşului, Magura de la Valea Mori, 500 m, oak forest, sifted, 6.VIII.2009, AG, ZGy, OM & TN.

\**Sepedophilus testaceus* (Fabricius, 1793) – Bârsana, Iza river, 450 m, singled from gravely riverside, 6.VIII.2009, AG, ZGy, OM & TN; Bârsana, Munţii Lăpuşului, Valea Mori, 460 m, sifted, 6.VIII.2009, AG, ZGy, OM & TN.

*Tachyporus atriceps* Stephens, 1832 – Bârsana, Munţii Lăpuşului, Valea Mori, 460 m, singled from gravely streamside, 6.VIII.2009, AG, ZGy, OM & TN.

\**Tachyporus formosus* Matthews, 1838 – Sighetu Marmăţiei, Dobăieş, 400 m, hay meadow, at light, 3.VIII.2009, AG, ZGy, OM & TN; Sighetu Marmăţiei, Dobăieş, 400 m, swept along the Rona river, 3.VIII.2009, AG, ZGy, OM & TN.

*Tachyusa balteata* Erichson, 1839 – Bârsana, Iza river, 450 m, singled from gravely riverside, 6.VIII.2009, AG, ZGy, OM & TN.

*Tachyusa coarctatoides* Pašnik, 2006 – Bârsana, Iza river, 450 m, singled from gravely riverside, 6.VIII.2009, AG, ZGy, OM & TN.

*Thinodromus hirticollis* (Mulsant et Rey, 1878) – Bârsana, Iza river, 450 m, singled from gravely riverside, 6.VIII.2009, AG, ZGy, OM & TN; Borşa, Munţii Rodnei, Pietrosul Rodnei, spruce zone, 1500 m, singled & swept, 5.VIII.2009, AG, ZGy, OM & TN.

\**Xantholinus procerus* Erichson 1839 (Fig. 3) – Bârsana, Iza river, 450 m, singled from gravely riverside, 6.VIII.2009, AG, ZGy, OM & TN; Bârsana, Munţii Lăpuşului, Magura de la Valea Mori, 500 m, oak forest, sifted, 6.VIII.2009, AG, ZGy, OM & TN.

\**Xantholinus tricolor* (Fabricius, 1787) – Bârsana, Iza river, 450 m, singled from gravely riverside, 6.VIII.2009, AG, ZGy, OM & TN.

#### Geotrupidae

Ottó Merkl (Budapest)

*Anoplotrupes stercorosus* (Scriba, 1791) – Săcel, Munţii Rodnei, Valea Izei, 850 m, stream valley, singled, 5.VIII.2009, AG, ZGy, OM & TN.

#### Scarabaeidae

Ottó Merkl (Budapest) (majority) & László Nádai (Budapest) (part of *Aphodius*)

*Aphodius abdominalis* Bonelli, 1812 – Borşa, Munţii Rodnei, Pietrosul Rodnei, spruce zone, 1500 m, singled & swept, 5.VIII.2009, AG, ZGy, OM & TN.

*Aphodius fimetarius* (Linnaeus, 1758) – Borşa, Munţii Rodnei, Pietrosul Rodnei, subalpine zone, 1800 m, singled & swept, 5.VIII.2009, AG, ZGy, OM & TN.

*Aphodius alpinus* (Scopoli, 1763) – Borşa, Munţii Rodnei, Pietrosul Rodnei, subalpine zone, 1800 m, singled & swept, 5.VIII.2009, AG, ZGy, OM & TN.

\**Aphodius haemorrhoidalis* (Linnaeus, 1758) – Săpânţa, Săpânţa river, 400 m, singled & swept at the riverside, 3.VIII.2009, AG, ZGy, OM & TN.

*Trichius fasciatus* (Linnaeus, 1758) – Borşa, Munţii Rodnei, Pietrosul Rodnei, subalpine zone, 1800 m, singled & swept, 5.VIII.2009, AG, ZGy, OM & TN; Săcel, Munţii Rodnei, Valea Izei, 850 m, stream valley, singled, 5.VIII.2009, AG, ZGy, OM & TN; Săpânţa, Săpânţa river, 400 m, singled & swept at the riverside, 3.VIII.2009, AG, ZGy, OM & TN.



Scirtidae

Ottó Merkl (Budapest)

\**Hydrocyphon deflexicollis* (P. W. J. Müller, 1821) – Bârsana, Munții Lăpușului, Valea Mori, 460 m, singled from gravely streamside, 6.VIII.2009, AG, ZGy, OM & TN.

Buprestidae

Tamás Németh (Budapest)

\**Agrilus angustulus* (Illiger, 1803) – Călinești, Munții Lăpușului, La Secătura, 600 m, mixed spruce & beech forest, swept & singled, 6.VIII.2009, AG, ZGy, OM & TN.

*Anthaxia quadripunctata* (Linnaeus, 1758) – Borșa, Munții Rodnei, Pietrosul Rodnei, spruce zone, 1500 m, singled & swept, 5.VIII.2009, AG, ZGy, OM & TN.

*Trachys minutus* (Linnaeus, 1758) – Borșa, Munții Rodnei, Pietrosul Rodnei, spruce zone, 1500 m, singled & swept, 5.VIII.2009, AG, ZGy, OM & TN.

Byrrhidae

Ottó Merkl (Budapest)

*Byrrhus pilula regalis* Steffahn, 1843 – Borșa, Munții Rodnei, Pietrosul Rodnei, subalpine zone, 1800 m, singled & swept, 5.VIII.2009, AG, ZGy, OM & TN.

*Carpathobyrrhulus transsylvanicus* (Suffrian, 1848) – Borșa, Munții Rodnei, Pietrosul Rodnei, spruce zone, 1500 m, singled & swept, 5.VIII.2009, AG, ZGy, OM & TN; Borșa, Munții Rodnei, Pietrosul Rodnei, subalpine zone, 1800 m, singled & swept, 5.VIII.2009, AG, ZGy, OM & TN.

Limnichidae

Ottó Merkl (Budapest)

\**Limnichus pygmaeus* (Sturm, 1807) – Bârsana, Iza river, 450 m, singled from gravely riverside, 6.VIII.2009, AG, ZGy, OM & TN; Sighetu Marmăției, Dobăieș, 400 m, hay meadow, at light, 3.VIII.2009, AG, ZGy, OM & TN.

Heteroceridae

Ottó Merkl (Budapest)

*Heterocerus fenestratus* (Thunberg, 1784) – Sighetu Marmăției, Dobăieș, 400 m, hay meadow, at light, 3.VIII.2009, AG, ZGy, OM & TN.

Elateridae

Tamás Németh (Budapest)

*Agriotes ustulatus* (Schaller, 1783) – Săpânța, Săpânța river, 400 m, singled & swept at the riverside, 3.VIII.2009, AG, ZGy, OM & TN.

*Ctenicera cuprea* (Fabricius, 1781) – Borșa, Munții Rodnei, Pietrosul Rodnei, subalpine zone, 1800 m, singled & swept, 5.VIII.2009, AG, ZGy, OM & TN.

*Eanus guttatus* (Germar, 1839) – Borșa, Munții Rodnei, Pietrosul Rodnei, spruce zone, 1500 m, singled & swept, 5.VIII.2009, AG, ZGy, OM & TN.

*Hypnoidus rivularius* (Gyllenhal, 1808) – Borșa, Munții Rodnei, Pietrosul Rodnei, spruce zone, 1500 m, singled & swept, 5.VIII.2009, AG, ZGy, OM & TN.

\**Synaptus filiformis* (Fabricius, 1781) – Sighetu Marmăției, Dobăieș, 400 m, hay meadow, at light, 3.VIII.2009, AG, ZGy, OM & TN.

*Zorochros dermestoides* (Herbst, 1806) – Bârsana, Iza river, 450 m, singled from gravely riverside, 6.VIII.2009, AG, ZG, OM & TN.

Cantharidae

Dezső Szalóki (Budapest)

\**Malthinus biguttatus* (Linnaeus, 1758) – Borșa, Munții Rodnei, Pietrosul Rodnei, spruce zone, 1500 m, singled & swept, 5.VIII.2009, AG, ZGy, OM & TN.

*Rhagonycha fulva* (Scopoli, 1763) – Călinești, Munții Lăpușului, La Secătura, 600 m, mixed spruce & beech forest, swept & singled, 6.VIII.2009, AG, ZGy, OM & TN.

\**Rhagonycha nigripes* W. Redtenbacher, 1842 – Borșa, Munții Rodnei, Pietrosul Rodnei, spruce zone, 1500 m, singled & swept, 5.VIII.2009, AG, ZGy, OM & TN.

Cleridae

Tamás Németh (Budapest)

*Trichodes apiarius* (Linnaeus, 1758) – Bârsana, Munții Lăpușului, Magura de la Valea Mori, 500 m, oak forest, swept & singled, 6.VIII.2009, AG, ZGy, OM & TN.

Malachiidae

Dezső Szalóki (Budapest)

\**Clanoptilus marginellus* (Olivier, 1790) – Călinești, Munții Lăpușului, La Secătura, 600 m, mixed spruce & beech forest, swept & singled, 6.VIII.2009, AG, ZGy, OM & TN.

Dasytidae

Ottó Merkl (Budapest)

*Dasytes plumbeus* (O. F. Müller, 1776) – Călinești, Munții Lăpușului, La Secătura, 600 m, mixed spruce & beech forest, swept & singled, 6.VIII.2009, AG, ZGy, OM & TN.

Monotomidae

Ottó Merkl (Budapest)

\**Monotoma picipes* Herbst, 1793 – Sighetu Marmăției, Dobăieș, 400 m, hay meadow, at light, 3.VIII.2009, AG, ZGy, OM & TN.



## Cryptophagidae

Ottó Merkl (Budapest)

\**Antherophagus pallens* (Linnaeus, 1758) – Săcel, Munții Rodnei, Valea Izei, 850 m, stream valley, singled, 5.VIII.2009, AG, ZGy, OM & TN.

## Erotylidae

Ottó Merkl (Budapest)

*Tritoma bipustulata* Fabricius, 1775 – Bârsana, Iza river, 450 m, singled from bracket fungi, 6.VIII.2009, AG, ZGy, OM & TN.

## Byturidae

Tamás Németh (Budapest)

*Byturus tomentosus* (DeGeer, 1774) – Borșa, Munții Rodnei, Pietrosul Rodnei, spruce zone, 1500 m, singled & swept, 5.VIII.2009, AG, ZGy, OM & TN.

## Alexiidae

Ottó Merkl (Budapest)

*Sphaerosoma globosum* (Sturm, 1807) – Bârsana, Munții Lăpușului, Magura de la Valea Mori, 500 m, oak forest, sifted, 6.VIII.2009, AG, ZGy, OM & TN.

## Coccinellidae

Ottó Merkl (Budapest)

*Adalia bipunctata* (Linnaeus, 1758) – Borșa, Munții Rodnei, Pietrosul Rodnei, spruce zone, 1500 m, singled & swept, 5.VIII.2009, AG, ZGy, OM & TN; Călinești, Munții Lăpușului, La Secătura, 600 m, mixed spruce & beech forest, swept & singled, 6.VIII.2009, AG, ZGy, OM & TN; Sighetu Marmației, Dobăieș, 400 m, hay meadow, at light, 3.VIII.2009, AG, ZGy, OM & TN.

*Aphidecta obliterated* (Linnaeus, 1758) – Borșa, Munții Rodnei, Pietrosul Rodnei, spruce zone, 1500 m, singled & swept, 5.VIII.2009, AG, ZGy, OM & TN.

\**Ceratomegilla undecimnotata* (Schneider, 1792) – Sighetu Marmației, Dobăieș, 400 m, swept along the Rona river, 3.VIII.2009, AG, ZGy, OM & TN.

*Coccinella quinquepunctata* Linnaeus, 1758 – Bârsana, Iza river, 450 m, singled from gravelly riverside, 6.VIII.2009, AG, ZGy, OM & TN.

*Coccinella septempunctata* Linnaeus, 1758 – Bârsana, Munții Lăpușului, Magura de la Valea Mori, 500 m, oak forest, swept & singled, 6.VIII.2009, AG, ZGy, OM & TN; Borșa, Munții Rodnei, Pietrosul Rodnei, spruce zone, 1500 m, singled & swept, 5.VIII.2009, AG, ZGy, OM & TN; Borșa, Munții Rodnei, Pietrosul Rodnei, subalpine zone, 1800 m, singled & swept, 5.VIII.2009, AG, ZGy, OM & TN; Călinești, Munții Lăpușului, La Secătura, 600 m, mixed spruce & beech forest, swept & singled, 6.VIII.2009, AG, ZGy, OM & TN; Sighetu Marmației, Dobăieș, 400 m, swept along the Rona river, 3.VIII.2009, AG, ZGy, OM & TN.

\**Coccinula quatuordecimpustulata* (Linnaeus, 1758) – Sighetu Marmației, Dobăieș, 400 m, swept along the Rona river, 3.VIII.2009, AG, ZGy, OM & TN.

\**Hippodamia variegata* (Goeze, 1777) – Bârsana, Munții Lăpușului, Magura de la Valea Mori, 500 m, oak forest, swept & singled, 6.VIII.2009, AG, ZGy, OM & TN; Călinești, Munții Lăpușului, La Secătura, 600 m, mixed spruce & beech forest, swept & singled, 6.VIII.2009, AG, ZGy, OM & TN; Săpânța, Săpânța river, 400 m, singled & swept at the riverside, 3.VIII.2009, AG, ZGy, OM & TN.

*Propylea quatuordecimpunctata* (Linnaeus, 1758) – Călinești, Munții Lăpușului, La Secătura, 600 m, mixed spruce & beech forest, swept & singled, 6.VIII.2009, AG, ZGy, OM & TN; Săpânța, Săpânța river, 400 m, singled & swept at the riverside, 3.VIII.2009, AG, ZGy, OM & TN.

*Psyllobora vigintiduopunctata* (Linnaeus, 1758) – Borșa, Munții Rodnei, Pietrosul Rodnei, spruce zone, 1500 m, singled & swept, 5.VIII.2009, AG, ZGy, OM & TN; Sighetu Marmației, Dobăieș, 400 m, swept along the Rona river, 3.VIII.2009, AG, ZGy, OM & TN.

*Scymnus abietis* (Paykull, 1798) – Borșa, Munții Rodnei, Pietrosul Rodnei, spruce zone, 1500 m, singled & swept, 5.VIII.2009, AG, ZGy, OM & TN.

\**Scymnus auritus* Thunberg, 1795 – Bârsana, Munții Lăpușului, Magura de la Valea Mori, 500 m, oak forest, sifted, 6.VIII.2009, AG, ZGy, OM & TN.

\**Scymnus suffrianioides apetzoides* Capra et Fürsch, 1967 – Bârsana, Munții Lăpușului, Magura de la Valea Mori, 500 m, oak forest, swept & singled, 6.VIII.2009, AG, ZGy, OM & TN; Sighetu Marmației, Dobăieș, 400 m, swept along the Rona river, 3.VIII.2009, AG, ZGy, OM & TN.

## Latridiidae

Ottó Merkl (Budapest)

\**Cartodere nodifer* (Westwood, 1839) – Sighetu Marmației, Dobăieș, 400 m, swept along the Rona river, 3.VIII.2009, AG, ZGy, OM & TN.

## Zopheridae

Tamás Németh (Budapest)

*Bitoma crenata* (Fabricius, 1775) – Bârsana, Iza river, 450 m, singled from bracket fungi, 6.VIII.2009, AG, ZGy, OM & TN; Călinești, Munții Lăpușului, La Secătura, 600 m, mixed spruce & beech forest, swept & singled, 6.VIII.2009, AG, ZGy, OM & TN.

*Nosodomodes tuberculatus* (Germar, 1832) – Bârsana, Munții Lăpușului, Magura de la Valea Mori, 500 m, oak forest, sifted, 6.VIII.2009, AG, ZGy, OM & TN; Călinești, Munții Lăpușului, La Secătura, 600 m, mixed spruce & beech forest, sifted, 6.VIII.2009, AG, ZGy, OM & TN; Călinești, Munții Lăpușului, La Secătura, 600 m, mixed spruce & beech forest, swept & singled, 6.VIII.2009, AG, ZGy, OM & TN.

## Tenebrionidae

Tamás Németh (Budapest)

*Laena reitteri* Weise, 1877 – Bârsana, Munții Lăpușului, Magura de la Valea Mori, 500 m, oak forest, sifted, 6.VIII.2009, AG, ZGy, OM & TN.

*Lagriaria hirta* (Linnaeus, 1758) – Bârsana, Munții Lăpușului, Valea Mori, 460 m, sifted, 6.VIII.2009, AG, ZGy, OM & TN; Bârsana, Munții Lăpușului, Magura de la Valea Mori, 500 m, oak forest, swept & singled, 6.VIII.2009, AG, ZGy, OM & TN; Borșa, Munții Rodnei, Pietrosul Rodnei, spruce zone, 1500 m, singled & swept, 5.VIII.2009, AG, ZGy, OM & TN; Săcel, Munții Rodnei, Valea Izei, 850 m, stream valley, singled, 5.VIII.2009, AG, ZGy, OM & TN; Sighetu Marmăției, Dobăieș, 400 m, hay meadow, at light, 3.VIII.2009, AG, ZGy, OM & TN.

*Scaphidema metallicum* (Fabricius, 1792) – Bârsana, Munții Lăpușului, Magura de la Valea Mori, 500 m, oak forest, sifted, 6.VIII.2009, AG, ZGy, OM & TN.

## Oedemeridae

Dezső Szalóki (Budapest)

\**Chrysanthia geniculata* (Schmidt, 1846) – Săcel, Munții Rodnei, Valea Izei, 850 m, stream valley, singled, 5.VIII.2009, AG, ZGy, OM & TN.

*Oedemera lurida* (Marsham, 1802) – Borșa, Munții Rodnei, Pietrosul Rodnei, spruce zone, 1500 m, singled & swept, 5.VIII.2009, AG, ZGy, OM & TN.

\**Oedemera podagrariae* (Linnaeus, 1767) – Bârsana, Munții Lăpușului, Magura de la Valea Mori, 500 m, oak forest, swept & singled, 6.VIII.2009, AG, ZGy, OM & TN; Călinești, Munții Lăpușului, La Secătura, 600 m, mixed spruce & beech forest, swept & singled, 6.VIII.2009, AG, ZGy, OM & TN; Sighetu Marmăției, Dobăieș, 400 m, swept along the Rona river, 3.VIII.2009, AG, ZGy, OM & TN.

## Cerambycidae

Gábor Hegyessy (Budapest) and Tamás Németh (Budapest)

*Anastrangalia sanguinolenta* (Linnaeus, 1761) – Săcel, Munții Rodnei, Valea Izei, 850 m, stream valley, singled, 5.VIII.2009, AG, ZGy, OM & TN.

\**Arhopalus rusticus* (Linnaeus 1758) – Borșa, Munții Rodnei, Pietrosul Rodnei, spruce zone, 1500 m, singled & swept, 5.VIII.2009, AG, ZGy, OM & TN.

*Carilia virginea* (Linnaeus, 1758) – Borșa, Munții Rodnei, Pietrosul Rodnei, spruce zone, 1500 m, singled & swept, 5.VIII.2009, AG, ZGy, OM & TN.

*Lepturobosca virens* (Linnaeus, 1758) – Săcel, Munții Rodnei, Valea Izei, 850 m, stream valley, singled, 5.VIII.2009, AG, ZGy, OM & TN.

*Monochamus sutor* (Linnaeus, 1758) – Borșa, Munții Rodnei, Pietrosul Rodnei, spruce zone, 1500 m, singled & swept, 5.VIII.2009, AG, ZGy, OM & TN.

*Pidonia lurida* (Fabricius, 1792) – Borșa, Munții Rodnei, Pietrosul Rodnei, spruce zone, 1500 m, singled & swept, 5.VIII.2009, AG, ZGy, OM & TN.

*Rutpela maculata* (Poda, 1761) – Călinești, Munții Lăpușului, La Secătura, 600 m, mixed spruce & beech forest, swept & singled, 6.VIII.2009, AG, ZGy, OM & TN.

*Stenurella melanura* (Linnaeus, 1758) – Borșa, Munții Rodnei, Pietrosul Rodnei, spruce zone, 1500 m, singled & swept, 5.VIII.2009, AG, ZGy, OM & TN.

*Stictoleptura rubra* (Linnaeus, 1758) – Borșa, Munții Rodnei, Pietrosul Rodnei, spruce zone, 1500 m, singled & swept, 5.VIII.2009, AG, ZGy, OM & TN; Săcel, Munții Rodnei, Valea Izei, 850 m, stream valley, singled, 5.VIII.2009, AG, ZGy, OM & TN.

*Strangalina attenuata* (Linnaeus, 1758) – Bârsana, Munții Lăpușului, Magura de la Valea Mori, 500 m, oak forest, swept & singled, 6.VIII.2009, AG, ZGy, OM & TN.

## Chrysomelidae

Ottó Merkl (Budapest) (majority) and Károly Vig (Szombathely) (a few specimens of *Altica*, *Cassida* and *Longitarsus*)

\**Agelastica alni* (Linnaeus, 1758) – Călinești, Munții Lăpușului, La Secătura, 600 m, mixed spruce & beech forest, swept & singled, 6.VIII.2009, AG, ZGy, OM & TN.

\**Altica tamaricis tamaricis* Schrank, 1785 – Bârsana, Iza river, 450 m, singled from gravelly riverside, 6.VIII.2009, AG, ZGy, OM & TN.

\**Cassida atrata* Fabricius, 1787 – Bârsana, Munții Lăpușului, Magura de la Valea Mori, 500 m, oak forest, swept & singled, 6.VIII.2009, AG, ZGy, OM & TN.

*Cassida rubiginosa* O. F. Müller, 1776 – Sighetu Marmăției, Dobăieș, 400 m, swept along the Rona river, 3.VIII.2009, AG, ZGy, OM & TN.

*Chaetocnema hortensis* (Geoffroy, 1785) – Sighetu Marmăției, Dobăieș, 400 m, swept along the Rona river, 3.VIII.2009, AG, ZGy, OM & TN.

\**Chrysolina carpathica carpathica* (Fuss, 1856) (Fig. 4) – Borșa, Munții Rodnei, Pietrosul Rodnei, subalpine zone, 1800 m, sifted, 5.VIII.2009, AG, ZGy, OM & TN; Borșa, Munții Rodnei, Pietrosul Rodnei, subalpine zone, 1800 m, singled & swept, 5.VIII.2009, AG, ZGy, OM & TN.

*Chrysolina fastuosa fastuosa* (Scopoli, 1763) – Călinești, Munții Lăpușului, La Secătura, 600 m, mixed spruce & beech forest, swept & singled, 6.VIII.2009, AG, ZGy, OM & TN; Sighetu Marmăției, Dobăieș, 400 m, swept along the Rona river, 3.VIII.2009, AG, ZGy, OM & TN.

*Chrysolina globipennis globipennis* (Suffrian, 1851) – Săcel, Munții Rodnei, Valea Izei, 850 m, stream valley, singled, 5.VIII.2009, AG, ZGy, OM & TN.



*Chrysolina haemoptera haemoptera* (Linnaeus, 1758) – Săcel, Munții Rodnei, Valea Izei, 850 m, stream valley, singled, 5.VIII.2009, AG, ZGy, OM & TN.

*Chrysolina herbacea* (Duftschmid, 1825) – Călinești, Munții Lăpușului, La Secătura, 600 m, mixed spruce & beech forest, swept & singled, 6.VIII.2009, AG, ZGy, OM & TN.

*Chrysolina varians* (Schaller, 1783) – Borșa, Munții Rodnei, Pietrosul Rodnei, spruce zone, 1500 m, singled & swept, 5.VIII.2009, AG, ZGy, OM & TN; Borșa, Munții Rodnei, Pietrosul Rodnei, subalpine zone, 1800 m, singled & swept, 5.VIII.2009, AG, ZGy, OM & TN; Călinești, Munții Lăpușului, La Secătura, 600 m, mixed spruce & beech forest, swept & singled, 6.VIII.2009, AG, ZGy, OM & TN.

*Chrysomela populi* Linnaeus, 1758 – Săpânța, Săpânța river, 400 m, singled & swept at the riverside, 3.VIII.2009, AG, ZGy, OM & TN.

*Crepidodera aurata* (Marsham, 1802) – Bârsana, Iza river, 450 m, singled from gravely riverside, 6.VIII.2009, AG, ZGy, OM & TN.

*Crepidodera aurea* (Geoffroy, 1785) – Călinești, Munții Lăpușului, La Secătura, 600 m, mixed spruce & beech forest, swept & singled, 6.VIII.2009, AG, ZGy, OM & TN.

*Cryptocephalus aureolus illyricus* Franz, 1949 – Borșa, Munții Rodnei, Pietrosul Rodnei, spruce zone, 1500 m, singled & swept, 5.VIII.2009, AG, ZGy, OM & TN.

\**Cryptocephalus labiatus* (Linnaeus, 1760) – Bârsana, Munții Lăpușului, Magura de la Valea Mori, 500 m, oak forest, sifted, 6.VIII.2009, AG, ZGy, OM & TN.

*Cryptocephalus moraei* (Linnaeus, 1758) – Săcel, Munții Rodnei, Valea Izei, 850 m, stream valley, singled, 5.VIII.2009, AG, ZGy, OM & TN; Sighetu Marmăției, Dobăieș, 400 m, swept along the Rona river, 3.VIII.2009, AG, ZGy, OM & TN.

*Cryptocephalus ocellatus ocellatus* Drapiez, 1819 – Bârsana, Iza river, 450 m, singled from gravely riverside, 6.VIII.2009, AG, ZGy, OM & TN.

\**Cryptocephalus sericeus* (Linnaeus, 1758) – Călinești, Munții Lăpușului, La Secătura, 600 m, mixed spruce & beech forest, swept & singled, 6.VIII.2009, AG, ZGy, OM & TN.

*Galerucella lineola lineola* (Fabricius, 1781) – Bârsana, Iza river, 450 m, singled from gravely riverside, 6.VIII.2009, AG, ZGy, OM & TN; Bârsana, Munții Lăpușului, Valea Mori, 460 m, sifted, 6.VIII.2009, AG, ZGy, OM & TN; Bârsana, Munții Lăpușului, Magura de la Valea Mori, 500 m, oak forest, sifted, 6.VIII.2009, AG, ZGy, OM & TN.

*Galerucella pusilla* (Duftschmid, 1825) – Călinești, Munții Lăpușului, La Secătura, 600 m, mixed spruce & beech forest, swept & singled, 6.VIII.2009, AG, ZGy, OM & TN.

*Gastrophysa viridula viridula* (DeGeer, 1775) – Borșa, Munții Rodnei, Pietrosul Rodnei, spruce zone, 1500 m, singled & swept, 5.VIII.2009, AG, ZGy, OM & TN; Borșa, Munții Rodnei, Pietrosul Rodnei, subalpine zone, 1800 m, singled & swept, 5.VIII.2009, AG, ZGy, OM & TN.

*Hippuriphila modeeri* (Linnaeus, 1760) – Călinești, Munții Lăpușului, La Secătura, 600 m, mixed spruce & beech forest, sifted, 6.VIII.2009, AG, ZGy, OM & TN.

*Leptinotarsa decemlineata* (Say, 1824) – Bârsana, Iza river, 450 m, singled from gravely riverside, 6.VIII.2009, AG, ZGy, OM & TN; Borșa, singled in town, 4.VIII.2009, AG, ZGy, OM & TN.

*Lochmaea caprea* (Linnaeus, 1758) – Călinești, Munții Lăpușului, La Secătura, 600 m, mixed spruce & beech forest, swept & singled, 6.VIII.2009, AG, ZGy, OM & TN.

*Longitarsus luridus* (Scopoli, 1763) – Bârsana, Iza river, 450 m, singled from gravely riverside, 6.VIII.2009, AG, ZGy, OM & TN.

*Longitarsus melanocephalus* (DeGeer, 1775) – Sighetu Marmăției, Dobăieș, 400 m, hay meadow, at light, 3.VIII.2009, AG, ZGy, OM & TN.

*Longitarsus obliterated* (Rosenhauer, 1847) – Săpânța, Săpânța river, 400 m, singled & swept at the riverside, 3.VIII.2009, AG, ZGy, OM & TN.

*Longitarsus pratensis* (Panzer, 1794) – Săpânța, Săpânța river, 400 m, singled & swept at the riverside, 3.VIII.2009, AG, ZGy, OM & TN; Sighetu Marmăției, Dobăieș, 400 m, swept along the Rona river, 3.VIII.2009, AG, ZGy, OM & TN.

*Minota carpathica* Heikertinger, 1912 – Borșa, Munții Rodnei, Pietrosul Rodnei, subalpine zone, 1800 m, sifted, 5.VIII.2009, AG, ZGy, OM & TN.

*Mniophila muscorum muscorum* (Koch, 1803) – Călinești, Munții Lăpușului, La Secătura, 600 m, mixed spruce & beech forest, sifted, 6.VIII.2009, AG, ZGy, OM & TN.

*Neocrepidodera ferruginea* (Scopoli, 1763) – Bârsana, Munții Lăpușului, Magura de la Valea Mori, 500 m, oak forest, swept & singled, 6.VIII.2009, AG, ZGy, OM & TN; Săcel, Munții Rodnei, Valea Izei, 850 m, stream valley, sifted, 5.VIII.2009, AG, ZGy, OM & TN; Săcel, Munții Rodnei, Valea Izei, 850 m, stream valley, singled, 5.VIII.2009, AG, ZGy, OM & TN.

\**Neocrepidodera transsilvanica* (Fuss, 1864) – Borșa, Munții Rodnei, Pietrosul Rodnei, spruce zone, 1500 m, singled & swept, 5.VIII.2009, AG, ZGy, OM & TN.

*Neocrepidodera transversa* (Marsham, 1802) – Bârsana, Munții Lăpușului, Magura de la Valea Mori, 500 m, oak forest, swept & singled, 6.VIII.2009, AG, ZGy, OM & TN; Călinești, Munții Lăpușului, La Secătura, 600 m, mixed spruce & beech forest, swept & singled, 6.VIII.2009, AG, ZGy, OM & TN.



*Oreina alpestris banatica* (Weise, 1884) – Borșa, Munții Rodnei, Pietrosul Rodnei, subalpine zone, 1800 m, singled & swept, 5.VIII.2009, AG, ZGy, OM & TN.

*Oreina caerulea* (Olivier, 1807) – Bârsana, Munții Lăpușului, Magura de la Valea Mori, 500 m, oak forest, swept & singled, 6.VIII.2009, AG, ZGy, OM & TN; Călinești, Munții Lăpușului, La Secătura, 600 m, mixed spruce & beech forest, swept & singled, 6.VIII.2009, AG, ZGy, OM & TN; Sighetu Marmăției, Dobăieș, 400 m, swept along the Rona river, 3.VIII.2009, AG, ZGy, OM & TN.

*Oreina intricata* (Germar, 1824) – Borșa, Munții Rodnei, Pietrosul Rodnei, spruce zone, 1500 m, singled & swept, 5.VIII.2009, AG, ZGy, OM & TN.

\**Oreina viridis* (Duftschmid, 1825) (Fig. 5) – Borșa, Munții Rodnei, Pietrosul Rodnei, subalpine zone, 1800 m, singled & swept, 5.VIII.2009, AG, ZGy, OM & TN.

*Oulema erichsonii* (Suffrian, 1841) – Sighetu Marmăției, Dobăieș, 400 m, swept along the Rona river, 3.VIII.2009, AG, ZGy, OM & TN.

*Phyllotreta vittula* (L. Redtenbacher, 1849) – Bârsana, Munții Lăpușului, Magura de la Valea Mori, 500 m, oak forest, swept & singled, 6.VIII.2009, AG, ZGy, OM & TN.

*Plagioderma versicolora* (Laicharting, 1781) – Bârsana, Iza river, 450 m, singled from gravelly riverside, 6.VIII.2009, AG, ZGy, OM & TN.

*Sphaeroderma rubidum* (Graëlls, 1858) – Bârsana, Munții Lăpușului, Valea Mori, 460 m, sifted, 6.VIII.2009, AG, ZGy, OM & TN.

\**Timarcha metallica* (Laicharting, 1781) – Borșa, Munții Rodnei, Pietrosul Rodnei, spruce zone, 1500 m, singled & swept, 5.VIII.2009, AG, ZGy, OM & TN.

#### Attelabidae

Attila Podlussány (Budapest)

*Apoderus coryli* (Linnaeus, 1758) – Săpânța, Săpânța river, 400 m, singled & swept at the riverside, 3.VIII.2009, AG, ZGy, OM & TN.

#### Apionidae

Attila Podlussány (Budapest)

*Catapion seniculus* (Kirby, 1808) – Bârsana, Munții Lăpușului, Magura de la Valea Mori, 500 m, oak forest, sifted, 6.VIII.2009, AG, ZGy, OM & TN.

*Ischnopteron virens* (Herbst, 1797) – Bârsana, Munții Lăpușului, Valea Mori, 460 m, sifted, 6.VIII.2009, AG, ZGy, OM & TN; Bârsana, Munții Lăpușului, Magura de la Valea Mori, 500 m, oak forest, sifted, 6.VIII.2009, AG, ZGy, OM & TN.

\**Perapion affine* (Kirby, 1808) – Borșa, Munții Rodnei, Pietrosul Rodnei, spruce zone, 1500 m, singled & swept, 5.VIII.2009, AG, ZGy, OM & TN.

*Protapion apricans* (Herbst, 1797) – Sighetu Marmăției, Dobăieș, 400 m, swept along the Rona river, 3.VIII.2009, AG, ZGy, OM & TN.

*Protapion fulvipes* (Geoffroy, 1785) – Bârsana, Munții Lăpușului, Valea Mori, 460 m, sifted, 6.VIII.2009, AG, ZGy, OM & TN; Bârsana, Munții Lăpușului, Magura de la Valea Mori, 500 m, oak forest, sifted, 6.VIII.2009, AG, ZGy, OM & TN; Bârsana, Munții Lăpușului, Magura de la Valea Mori, 500 m, oak forest, swept & singled, 6.VIII.2009, AG, ZGy, OM & TN; Sighetu Marmăției, Dobăieș, 400 m, swept along the Rona river, 3.VIII.2009, AG, ZGy, OM & TN.

*Protapion gracilipes* (Dietrich, 1857) – Săpânța, Săpânța river, 400 m, singled & swept at the riverside, 3.VIII.2009, AG, ZGy, OM & TN.

*Protapion trifolii* (Linnaeus, 1768) – Călinești, Munții Lăpușului, La Secătura, 600 m, mixed spruce & beech forest, sifted, 6.VIII.2009, AG, ZGy, OM & TN; Sighetu Marmăției, Dobăieș, 400 m, swept along the Rona river, 3.VIII.2009, AG, ZGy, OM & TN.

*Protapion varipes* (Germar, 1817) – Sighetu Marmăției, Dobăieș, 400 m, swept along the Rona river, 3.VIII.2009, AG, ZGy, OM & TN.

#### Nanophyidae

Attila Podlussány (Budapest)

*Nanophyes marmoratus* (Goeze, 1777) – Călinești, Munții Lăpușului, La Secătura, 600 m, mixed spruce & beech forest, swept & singled, 6.VIII.2009, AG, ZGy, OM & TN; Săpânța, Săpânța river, 400 m, singled & swept at the riverside, 3.VIII.2009, AG, ZGy, OM & TN.

#### Curculionidae

Attila Podlussány (Budapest)

*Acalles fallax* Boheman, 1844 – Bârsana, Munții Lăpușului, Magura de la Valea Mori, 500 m, oak forest, sifted, 6.VIII.2009, AG, ZGy, OM & TN.

\**Anthonomus pomorum* (Linnaeus, 1758) – Bârsana, Munții Lăpușului, Magura de la Valea Mori, 500 m, oak forest, sifted, 6.VIII.2009, AG, ZGy, OM & TN.

*Anthonomus rubi* (Herbst, 1795) – Borșa, Munții Rodnei, Pietrosul Rodnei, spruce zone, 1500 m, singled & swept, 5.VIII.2009, AG, ZGy, OM & TN.

*Bryodaemon hanakii hanakii* (Frivaldszky, 1865) – Călinești, Munții Lăpușului, La Secătura, 600 m, mixed spruce & beech forest, sifted, 6.VIII.2009, AG, ZGy, OM & TN.

\**Curculio propinquus* (Desbrochers, 1868) – Bârsana, Munții Lăpușului, Magura de la Valea Mori, 500 m, oak forest, swept & singled, 6.VIII.2009, AG, ZGy, OM & TN.

*Glocianus moelleri* (Thomson, 1868) – Bârsana, Munții Lăpușului, Valea Mori, 460 m, sifted, 6.VIII.2009, AG, ZGy, OM & TN; Bârsana, Munții Lăpușului, Magura de la Valea Mori, 500 m, oak forest, swept & singled, 6.VIII.2009, AG, ZGy, OM & TN.

*Hypera meles* (Fabricius, 1792) – Sighetu Marmăției, Dobăieș, 400 m, swept along the Rona river, 3.VIII.2009, AG, ZGy, OM & TN.

*Hypera nigrirostris* (Fabricius, 1775) – Bârsana, Munții Lăpușului, Valea Mori, 460 m, sifted, 6.VIII.2009, AG, ZGy, OM & TN.

*Larinus obtusus* Gyllenhal, 1835 – Bârsana, Munții Lăpușului, Magura de la Valea Mori, 500 m, oak forest, swept & singled, 6.VIII.2009, AG, ZGy, OM & TN; Călinești, Munții Lăpușului, La Secătura, 600 m, mixed spruce & beech forest, swept & singled, 6.VIII.2009, AG, ZGy, OM & TN.

*Larinus carlinae* (Olivier, 1807) (= *planus* of authors, not Fabricius, 1792) – Călinești, Munții Lăpușului, La Secătura, 600 m, mixed spruce & beech forest, swept & singled, 6.VIII.2009, AG, ZGy, OM & TN.

\**Larinus sturnus* (Schaller, 1783) – Săpânța, Săpânța river, 400 m, singled & swept at the riverside, 3.VIII.2009, AG, ZGy, OM & TN.

*Larinus turbinatus* Gyllenhal, 1835 – Bârsana, Munții Lăpușului, Magura de la Valea Mori, 500 m, oak forest, swept & singled, 6.VIII.2009, AG, ZGy, OM & TN.

*Liophloeus herbstii* Gyllenhal, 1834 – Borșa, Munții Rodnei, Pietrosul Rodnei, subalpine zone, 1800 m, singled & swept, 5.VIII.2009, AG, ZGy, OM & TN.

*Liophloeus lentus* Germar, 1824 – Borșa, Munții Rodnei, Pietrosul Rodnei, spruce zone, 1500 m, singled & swept, 5.VIII.2009, AG, ZGy, OM & TN; Borșa, Munții Rodnei, Pietrosul Rodnei, subalpine zone, 1800 m, singled & swept, 5.VIII.2009, AG, ZGy, OM & TN.

*Neoglanis tessellatus* Boheman, 1834 – Sighetu Marmăției, Dobăieș, 400 m, swept along the Rona river, 3.VIII.2009, AG, ZGy, OM & TN.

\**Otiorhynchus bisulcatus* (Fabricius, 1781) – Borșa, Munții Rodnei, Pietrosul Rodnei, subalpine zone, 1800 m, singled & swept, 5.VIII.2009, AG, ZGy, OM & TN.

\**Otiorhynchus gemmatus* (Scopoli, 1763) – Bârsana, Munții Lăpușului, Magura de la Valea Mori, 500 m, oak forest, swept & singled, 6.VIII.2009, AG, ZGy, OM & TN.

\**Otiorhynchus kollari* Gyllenhal, 1834 – Călinești, Munții Lăpușului, La Secătura, 600 m, mixed spruce & beech forest, swept & singled, 6.VIII.2009, AG, ZGy, OM & TN.

*Otiorhynchus morio* (Fabricius, 1781) – Borșa, Munții Rodnei, Pietrosul Rodnei, subalpine zone, 1800 m, singled & swept, 5.VIII.2009, AG, ZGy, OM & TN.

*Otiorhynchus multipunctatus* (Fabricius, 1792) – Bârsana, Munții Lăpușului, Magura de la Valea Mori, 500 m, oak forest, sifted, 6.VIII.2009, AG, ZGy, OM & TN; Bârsana, Munții Lăpușului, Magura de la Valea Mori, 500 m, oak forest, swept & singled, 6.VIII.2009, AG, ZGy, OM & TN.

*Otiorhynchus pauxillus* Rosenhauer, 1847 – Săcel, Munții Rodnei, Valea Izei, 850 m, stream valley, sifted, 5.VIII.2009, AG, ZGy, OM & TN.

*Otiorhynchus scaber* (Linnaeus, 1758) – Săcel, Munții Rodnei, Valea Izei, 850 m, stream valley, sifted, 5.VIII.2009, AG, ZGy, OM & TN.

*Otiorhynchus tenebricosus* (Herbst, 1783) – Borșa, Munții Rodnei, Pietrosul Rodnei, spruce zone, 1500 m, singled & swept, 5.VIII.2009, AG, ZGy, OM & TN.

*Phyllobius viridicollis* (Fabricius, 1792) – Borșa, Munții Rodnei, Pietrosul Rodnei, spruce zone, 1500 m, singled & swept, 5.VIII.2009, AG, ZGy, OM & TN.

\**Plinthus tischeri* Germar, 1824 – Borșa, Munții Rodnei, Pietrosul Rodnei, subalpine zone, 1800 m, sifted, 5.VIII.2009, AG, ZGy, OM & TN.

*Polydrusus amoenus* (Germar, 1824) – Borșa, Munții Rodnei, Pietrosul Rodnei, spruce zone, 1500 m, singled & swept, 5.VIII.2009, AG, ZGy, OM & TN.

\**Polydrusus fulvicornis* (Fabricius, 1792) – Borșa, Munții Rodnei, Pietrosul Rodnei, spruce zone, 1500 m, singled & swept, 5.VIII.2009, AG, ZGy, OM & TN.

*Rhinoncus pericarpus* (Linnaeus, 1758) – Sighetu Marmăției, Dobăieș, 400 m, swept along the Rona river, 3.VIII.2009, AG, ZGy, OM & TN.

*Sciaphilus asperatus* (Bonsdorff, 1785) – Bârsana, Munții Lăpușului, Magura de la Valea Mori, 500 m, oak forest, sifted, 6.VIII.2009, AG, ZGy, OM & TN.

*Sitona hispidulus* (Fabricius, 1776) – Călinești, Munții Lăpușului, La Secătura, 600 m, mixed spruce & beech forest, sifted, 6.VIII.2009, AG, ZGy, OM & TN.

*Sitona lineatus* (Linnaeus, 1758) – Borșa, Munții Rodnei, Pietrosul Rodnei, spruce zone, 1500 m, singled & swept, 5.VIII.2009, AG, ZGy, OM & TN.

*Sitona sulcifrons* (Thunberg, 1798) – Călinești, Munții Lăpușului, La Secătura, 600 m, mixed spruce & beech forest, sifted, 6.VIII.2009, AG, ZGy, OM & TN.

#### Scolytidae

Attila Podlussány (Budapest)

*Ips typographus* (Linnaeus, 1758) – Bârsana, Munții Lăpușului, Magura de la Valea Mori, 500 m, oak forest, swept & singled, 6.VIII.2009, AG, ZGy, OM & TN.

#### DISCUSSIONS

The present paper lists 266 beetle species from the Maramureș region, Romania. Most of them are well-known inhabitants of the Carpathians and Romania. The following species deserve special attention.

*Amara misella* Miller, 1868 (Carabidae) (Fig. 1) – It is endemic to subalpine and alpine belts of the Eastern and Southern Carpathians.

*Hypsonothrus deubeli* (Ganglbauer 1896) (Staphylinidae) (Fig. ) – Not a strictly alpine species, but endemic in the Carpathians. It is known from the major mountain ranges of the Eastern and Southern Carpathians, most specimens are from limestone or partly limestone mountains. Flightless, it lives in alpine meadows, frequently found among grasses and roots of plants. It was also sifted from mosses and plants





in between stones, but at the same time, its nearest relatives are confined to edges of withdrawing (melting) snowpatches. The specimens were mostly found in the summer months.

*Xantholinus procerus* Erichson 1839 (Staphylinidae) (Fig. 3) – It occurs in the Northern and Eastern parts of Central Europe, in the Balkans, Turkey and the Caucasus. In the Carpathians it was so far found in Maramureș and in the southern half of Transylvania (Sighisoara; Sasca Montana: bank of Nera). Mostly on riverbanks, between and under stones, but now one specimen was found by sifting oak litter. An extremely rare species, only collected in the summer months.

*Chrysolina carpathica carpathica* (Fuss, 1856) (Chrysomelidae) (Fig. 4) – The nominotypical subspecies occurs in the Eastern and Southeastern Carpathians (in Romania and Ukraine), while *Chrysolina carpathica gabrieli* (Weise, 1903) in the Northern Carpathians (Slovakia and Poland). This flightless species inhabits the subalpine meadows. *Csiki* (1951) erroneously mentioned it from the Munții Rodnei under the name „*Chrysolina lichenis* Richt.” as a synonym of the latter. However, *Chrysolina lichenis* (Richter, 1820) and *C. carpathica* are distinct species.

*Oreina viridis* (Duftschmid, 1825) (Chrysomelidae) (Fig. 5) – It is distributed from the Vosges and the Pyrenees through the Alps and the Carpathians to the western part of the Balkan Peninsula. According to some authors (e.g. *Kaszab*, 1962) its foodplant is Green Alder (*Alnus viridis*). However, this may be based on a misinterpreted observation, since all European congeners feed on herbaceous plants, mainly on species of Apiaceae and Asteraceae. *Koch* (1992) writes that „Larvenfrass an *Ligusticum mutellina*”; this plant, Mountain Lovage is a member of Apiaceae.

*Csiki* (1951) published a comprehensive account of the beetles known to occur in Munții Rodnei (the whole massif, not only the smaller part belonging to Maramureș), based on literature data and previously unpublished collectings. He listed 1342 species and „varieties”, and noted that „Mit dieser ansehnlichen Zahl gelangte das Radnaer Gebirge als bisher besterforschte Gebirgsgegend der Karpaten an die erste Stelle der Karpathenkette” [With this considerable number Rodna Mountains, the so far best studied mountainous region of the Carpathians, arrives at the first place in the chain of the Carpathians.”] Since then a number of records or even species lists of various beetle groups were published from Munții Rodnei, but as far as we know his paper is the only complete inventory of Coleoptera of these mountains. The following 124 species mentioned in *Merkl* (2008) and in the present paper were not reported by *Csiki* (1951).

*Elaphrus cupreus* Duftschmid, 1812 (Carabidae)

*Elaphrus riparius* (Linnaeus, 1758) (Carabidae)

*Notiophilus aestuans* Dejean, 1826 (Carabidae)

*Pterostichus diligens* (Sturm, 1824) (Carabidae)

*Pterostichus rhaeticus* Heer, 1837 (Carabidae)

*Pterostichus strenuus* (Panzer, 1796) (Carabidae)

*Trechus pulpani* Reška, 1965 (Carabidae)

*Helophorus aquaticus* (Linnaeus, 1758)

(Helophoridae)

*Catops tristis* (Panzer, 1794) (Leiodidae) (mentioned from Munții Rodnei by *Nitzu et al.*, 2008)

*Leiodes calcarata* (Erichson, 1845) (Leiodidae)

*Sciodrepoides watsoni* (Spence, 1815) (Leiodidae)

*Silpha tristis* Illiger, 1798 (Silphidae)

*Aloconota cambrica* (Wollaston, 1855)

(Staphylinidae)

*Anotylus rugosus* (Fabricius, 1775) (Staphylinidae)

*Anotylus speculifrons* (Kraatz, 1857) (Staphylinidae)

*Anthophagus forticornis* Kiesenwetter, 1846

(Staphylinidae)

*Anthophagus omalinus* Zetterstedt, 1828

(Staphylinidae) (mentioned from Munții Rodnei by *Stan*, 2002)

*Atheta ravilla* (Erichson, 1839) (Staphylinidae)

*Atheta rugulosa* (Heer, 1839) (Staphylinidae)

*Autalia puncticollis* Sharp, 1864 (Staphylinidae)

*Carpelimus obesus* (Kiesenwetter, 1844)

(Staphylinidae)

*Eusphalerum tenenbaumi* (Bernhauer, 1932)

(Staphylinidae)

*Lathrobium dilutum* Erichson, 1839 (Staphylinidae)

*Mycetoporus bimaculatus* Lacordaire, 1835

(Staphylinidae)

*Ochtheophilus omalinus* (Erichson, 1840)

(Staphylinidae)

*Omalius strigicollis* Wankowicz, 1869

(Staphylinidae)

*Quedius curtipennis* Bernhauer, 1908

(Staphylinidae)

*Stenus cephalenicus* Bernhauer, 1913

(Staphylinidae)

*Stenus flavipes* Stephens, 1833 (Staphylinidae)

*Stenus fulvicornis* Stephens, 1833 (Staphylinidae)

*Stenus tarsalis* Ljungh, 1810 (Staphylinidae)

*Tachyporus atriceps* Stephens, 1832 (Staphylinidae)

*Tachyporus obtusus* (Linnaeus, 1767)

(Staphylinidae)

*Trichophya pilicornis* (Gyllenhal, 1810)

(Staphylinidae)

*Aphodius abdominalis* Bonelli, 1812 (Scarabaeidae)

*Aphodius depressus* (Kugelann, 1792)

(Scarabaeidae)

*Anthaxia helvetica* Stierlin, 1868 (Buprestidae)

*Trachys minutus* (Linnaeus, 1758) (Buprestidae)

*Byrrhus arietinus* Steffahn, 1843 (Byrrhidae)

*Limnius perrisi* (Dufour, 1843) (Elmidae)

*Limnius volckmari* (Panzer, 1793) (Elmidae)

*Ampedus cinnabarinus* (Eschscholtz, 1829)

(Elateridae)

- Anostirus gracilicollis* (Stierlin, 1896) (Elateridae)  
*Melanotus castanipes* (Paykull, 1800) (Elateridae)  
*Melanotus villosus* (Geoffroy, 1785) (Elateridae)  
*Phosphaenus hemipterus* (Geoffroy, 1762)  
 (Lampyridae)  
*Cantharis obscura* Linnaeus, 1758 (Cantharidae)  
*Cantharis rustica* Fallén, 1807 (Cantharidae)  
*Malthinus biguttatus* (Linnaeus, 1758) (Cantharidae)  
*Rhagonycha atra* (Linnaeus, 1767) (Cantharidae)  
*Rhagonycha nigriventris* Motschulsky, 1860  
 (Cantharidae)  
*Megatoma undata* (Linnaeus, 1758) (Dermestidae)  
*Ptilinus pectinicornis* (Linnaeus, 1758)  
 (Dermestidae)  
*Ptinomorphus imperialis* (Linnaeus, 1767)  
 (Anobiidae)  
*Thanasimus formicarius* (Linnaeus, 1758) (Cleridae)  
*Cyllodes ater* (Herbst, 1792) (Cleridae)  
*Epuraea aestiva* (Linnaeus, 1758) (Nitidulidae)  
*Epuraea marseuli* Reitter, 1872 (Nitidulidae)  
*Epuraea melanocephala* (Marsham, 1802)  
 (Nitidulidae)  
*Epuraea rufomarginata* (Stephens, 1830)  
 (Nitidulidae)  
*Glischrochilus quadriguttatus* (Fabricius, 1776)  
 (Nitidulidae)  
*Glischrochilus quadrisignatus* (Say, 1835)  
 (Nitidulidae)  
*Combocerus glaber* (Schaller, 1783) (Erotylidae)  
*Triplax scutellaris* Charpentier, 1825 (Erotylidae)  
*Mycetina cruciata* (Schaller, 1783) (Endomychidae)  
*Corticarina parvula* (Mannerheim, 1844)  
 (Latridiidae)  
*Curtimorda maculosa* (Neazen, 1794) (Mordellidae)  
*Nosodomodes tuberculatus* (Germar, 1832)  
 (Zopheridae)  
*Mycetochara roubali* Mañan, 1935 (Tenebrionidae)  
*Uloma culinaris* (Linnaeus, 1758) (Tenebrionidae)  
*Anogcodes ruficollis* (Fabricius, 1781)  
 (Oedemeridae)  
*Ischnomera cyanea* (Fabricius, 1787) (Oedemeridae)  
*Oedemera lurida* (Marsham, 1802) (Oedemeridae)  
*Meloe rugosus* Marsham, 1802 (Meloidea)  
*Meloe violaceus* Marsham, 1802 (Meloidea)  
 (mentioned from Munții Rodnei by Nitzu et al., 2008)  
*Anaspis marginicollis* Lindberg, 1925 (Scraptiidae)  
*Anaspis rufilabris* Gyllenhal, 1827 (Scraptiidae)  
*Anaspis thoracica* (Linnaeus, 1758) (Scraptiidae)  
*Aseum striatum* (Linnaeus, 1758) (Cerambycidae)  
*Prionus coriarius* (Linnaeus, 1758) (Cerambycidae)  
 (mentioned from Munții Rodnei by Serafim, 1997)  
*Bromius obscurus* (Linnaeus, 1758) (Chrysomelidae)  
*Cassida vibex* Linnaeus, 1767 (Chrysomelidae)  
*Chrysolina haemoptera haemoptera* (Linnaeus,  
 1758) (Chrysomelidae)  
*Cryptocephalus transiens* Franz, 1949  
 (Chrysomelidae)  
*Gonioctena pallida* (Linnaeus, 1758)  
 (Chrysomelidae)  
*Leptinotarsa decemlineata* (Say, 1824)  
 (Chrysomelidae) (mentioned from Munții Rodnei by  
*Maican & Serafim*, 2001, 2004)  
*Longitarsus longiseta* Weise, 1889 (Chrysomelidae)  
*Mniophila muscorum* (Koch, 1803) (Chrysomelidae)  
 (mentioned from Munții Rodnei by *Maican & Serafim*,  
 2001 and *Nitzu et al.*, 2008)  
*Neocrepidodera ferruginea* (Scopoli, 1763)  
 (Chrysomelidae)  
*Oulema erichsonii* (Suffrian, 1841) (Chrysomelidae)  
*Oulema gallaeciana* (Heyden, 1870)  
 (Chrysomelidae)  
*Oulema melanopus* (Linnaeus, 1758)  
 (Chrysomelidae)  
*Psylliodes napi* (Fabricius, 1792) (Chrysomelidae)  
*Ceratapion gibbirostre* (Gyllenhal, 1813)  
 (Apionidae)  
*Perapion affine* (Kirby, 1808) (Apionidae)  
*Anthonomus pinivorax* Silfverberg, 1977  
 (Curculionidae)  
*Ceutorhynchus constrictus* (Marsham, 1802)  
 (Curculionidae)  
*Hypera meles* (Fabricius, 1792) (Curculionidae)  
*Liophloeus herbstii* Gyllenhal, 1834 (Curculionidae)  
*Liophloeus lentus* Germar, 1824 (Curculionidae)  
*Miarus monticola* Petri, 1912 (Curculionidae)  
*Neoglanis comatus* (Boheman, 1842)  
 (Curculionidae)  
*Notaris aethiops* (Fabricius, 1792) (Curculionidae)  
*Otiorhynchus alpicola* Boheman, 1843  
 (Curculionidae)  
*Otiorhynchus asplenii* Miller, 1868 (Curculionidae)  
 (mentioned from Munții Rodnei by *Procheş*, 1998)  
*Otiorhynchus bisulcatus* (Fabricius, 1781)  
 (Curculionidae)  
*Otiorhynchus coecus* Germar, 1824 (Curculionidae)  
*Otiorhynchus depilis* Smreczyński, 1935  
 (Curculionidae)  
*Otiorhynchus peneckianus* Smreczyński, 1967  
 (Curculionidae)  
*Otiorhynchus tenebricosus* (Herbst, 1783)  
 (Curculionidae)  
*Pissodes validirostris* (C. R. Sahlberg, 1834)  
 (Curculionidae)  
*Plinthus findeli* Boheman, 1842 (Curculionidae)  
*Polydrusus fulvicornis* (Fabricius, 1792)  
 (Curculionidae)  
*Rhinoncus inconspectus* (Herbst, 1795)  
 (Curculionidae)  
*Sciaphilus asperatus* (Bonsdorff, 1785)  
 (Curculionidae)  
*Sitona cylindricollis* Fahraeus, 1840 (Curculionidae)



*Sitona lineatus* (Linnaeus, 1758) (Curculionidae)  
*Trachodes hispidus* (Linnaeus, 1758)  
 (Curculionidae)  
*Tropiphorus micans* Boheman, 1842 (Curculionidae)  
*Cryphalus abietis* (Ratzeburg, 1837) (Scolytidae)  
*Crypturgus cinereus* (Herbst, 1793) (Scolytidae)  
*Crypturgus pusillus* (Gyllenhal, 1813) (Scolytidae)  
*Dryocoetes hectographus* Reitter, 1913 (Scolytidae)  
*Orthotomicus laricis* (Fabricius, 1792) (Scolytidae)

### CORRECTION OF A PREVIOUS RECORD

*Dasytes hickeri* Kaszab, 1955 (Dasytidae) was recorded by Merkl (2008) as a species new to Romania. Dr Gianfranco Liberti (Uboldo, Italy) checked the voucher specimen and considers the record to be a misidentification of a specimen of *Dasytes niger* (Linnaeus, 1760).

### ACKNOWLEDGEMENTS

Our most sincere thanks are due to József Béres (Museum of Maramureş, Sighetu Marmăţiei) for organizing the trip and his help in field work. Without his excellent knowledge of the Maramureş region and local situations the collecting work simply could not be possible. The authors thank Gavrilă Ardelean (Universitatea de Vest „Vasile Goldiş”, Arad) for covering most of the costs of the trip; Aranka Grabant and Zoltán György (HNHM, Budapest) for collecting and data entering; Edit Hámori (HNHM, Budapest) for mounting and labelling the collected material; Gábor Hegyessy (Sátorajújhely), László Nádai (Budapest), Dezső Szalóki (Budapest) and Károly Vig (Szombathely) for their help in identification. This work was supported by the programme “Investigation of invertebrates in Maramureş” launched by the University Vasile Goldiş (Arad) and by a Hungarian National R&D Programme (The origin and genesis of the fauna of the Carpathian Basin: diversity, biogeographical hotspots and nature conservation significance; project no: 3B023-0-4).

### REFERENCES

Csiki, E, Fauna zhukov gory Radna. (Die Käferfauna des Radnaer Gebirges.) Acta zoologica Academiae scientiarum hungaricae, 2(1–3), 119–168, 1951.  
 Kaszab, Z, Levélbogarak – Chrysomelidae. In: Magyarország állatvilága (Fauna Hungariae), IX, 6. Akadémiai Kiadó, Budapest, 416 pp, 1962.  
 Koch, K, Die Käfer Mitteleuropas. Ökologie. Band 3. Goecke & Evers, Krefeld, 389 pp, 1992.  
 Maican, S, Serafim, R, Chrysomelidae (Coleoptera) from Maramureş (Romania). Travaux du Muséum National d’Histoire Naturelle „Grigore Antipa”, 43, 199–233, 2001.  
 Maican, S, Serafim, R, Leaf beetles (Coleoptera: Chrysomelidae) from Maramureş (Romania).

Travaux du Muséum National d’Histoire Naturelle „Grigore Antipa”, 46, 139–159, 2004.

Merkl, O, Data to the knowledge on the beetle fauna of Maramureş, Romania (Coleoptera). Studia Universitatis Vasile Goldiş, Seria Ştiinţele Vieţii (Life Science Series), 18(Supplement), 243–311, 2008.  
 Merkl, O, Vig, K, Bogarak a pannon régióban. [Beetles in the Pannonian Region.] Vas Megyei Múzeumok Igazgatósága, B. K. L. Kiadó, Magyar Természettudományi Múzeum, Szombathely, 494 pp, 2009.  
 Nitzu, E, Nae, A, Popa, I, The fauna of soil beetles (edaphic Coleoptera) as a sensitive indicator of evolution and conservation of ecosystems. A study on the altitudinal gradient in the Rodnei Mountains Biosphere Reserve (the Carpathians). Pp. 405–417. In: Makarov, SE, Dimitrijević, RN (eds), Advances in Arachnology and Developmental Biology. Papers dedicated to Prof. Božidar Čurčić. Institute of Zoology, Faculty of Biology, University of Belgrade; Committee for Karst and Speleology, Serbian Academy of Sciences and Arts in Belgrade; Institute of Zoology, Bulgarian Academy of Sciences; Faculty of Life Sciences, University of Vienna in Vienna; and UNESCO MAB Committee Serbia in Belgrade, Belgrade-Vienna-Sofia, 517 pp, 2008.  
 Procheş, Ş, Superfamily Curculionoidea (Coleoptera) in Maramureş (Romania). Travaux du Muséum National d’Histoire Naturelle „Grigore Antipa”, 40, 525–545, 1998.  
 Serafim, R, Contributions to the knowledge of the distribution of Coccinellidae and Cerambycidae (Coleoptera) in Maramureş Depression and Rodnei Mountains (Romania). Travaux du Muséum National d’Histoire Naturelle „Grigore Antipa”, 37, 69–87, 1997.  
 Stan, M, Rove beetles (Coleoptera: Staphylinidae) from Maramureş (Romania). Travaux du Muséum National d’Histoire Naturelle „Grigore Antipa”, 44, 209–248, 2002.



FIGURES

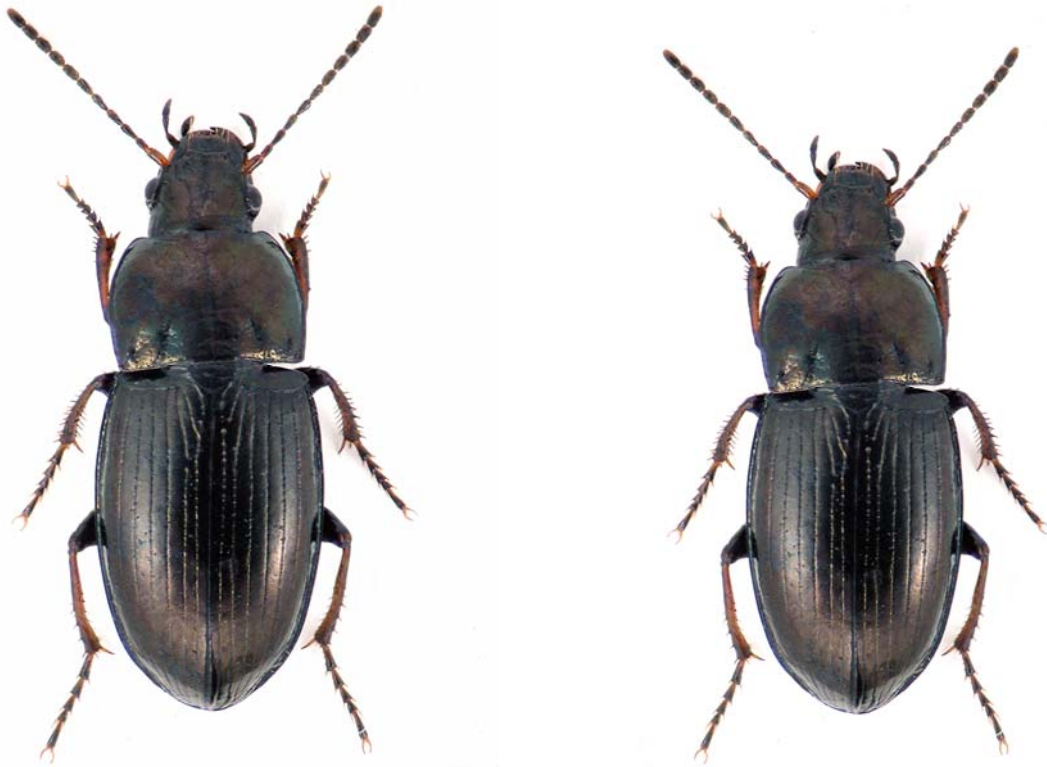


Fig. 1 *Amara misella* Miller, 1868 (Carabidae)



Fig. 2 *Hypsonothrus deubeli* (Ganglbauer 1896)



Fig. 3 *Xantholinus procerus* Erichson 1839 (Staphylinidae)



Fig. 4 *Chrysolina carpathica carpathica* (Fuss, 1856) (Chrysomelidae)



Fig. 5 *Oreina viridis* (Duftschmid, 1825) (Chrysomelidae)